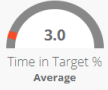


Store: 2688 Case: b01.1d For period ending: Thu, 07 Oct 2021 View

2688 | b | b01.1 | b01.1d B01.1 IC DRS low temp | door | ice cream

Date range: Mon Oct 04 2021 - Thu Oct 07 2021 Data Source: IoT

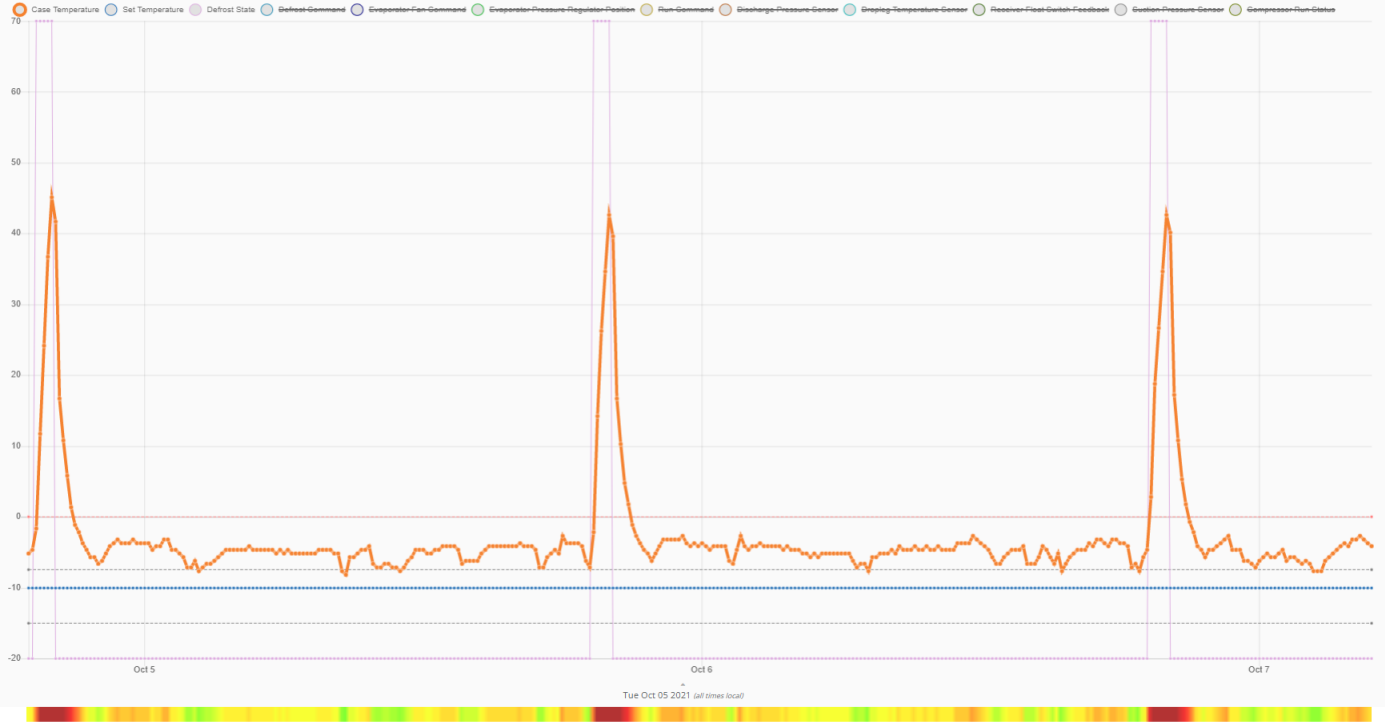
Last Updated: Thu, Oct 7, 2021 09:30 AM CDT



Observations:

- > AVERAGE CASE TEMPERATURE IS WELL OUTSIDE TARGET BAND (HIGH).
- > CASE SIBLINGS ON THIS CIRCUIT ARE PERFORMING IN AN UNHEALTHY RANGE.
- > TEMPERATURE IS OBSERVED TO BE RISING IN BETWEEN DEFROST CYCLES.

View Quick Look Report



Cases on this Circuit / Rack

Case #	% Time in Target	Link	Circuit #	Rack	Health %
b01.1d	3%	This case	b01.1	b	7
b01.1b	4%	[Click to View]	b01.1	b	9
b01.1a	19%	[Click to View]	b01.1	b	12
b01.1c	13%	[Click to View]	b01.1	b	11

Case Information

No case parameter information available

Characteristics	Value	Class Avg	Description
General			
average_temperature	-4.95	↑ -8.76	Average temperature of case (excluding defrost periods)
stdev_temperature	1.18	2.35	Standard deviation of case temperature (excluding defrost)
min_temperature	-8.15	↑ -12.31	Minimum temperature observed (including defrost)
max_temperature	45.14	44.95	Maximum temperature observed (including defrost)
average_setpoint	-10.00	-11.04	Average setpoint temperature
device_setpoint_offset	0.00	-0.38	Setpoint override amount (device setting vs. setpoint in use)
average_slope_no_defrost	0.02	↑ 0.00	Slope of temperature increase(decrease) between defrost cycles
Performance			
pct_time_in_target	3.00	↓ 54.95	Percentage of time temperature was within 2.5 degrees of setpoint (not including defrost)
pct_time_in_range_5	42.00	↓ 80.11	Percentage of time temperature was within 5 degrees of setpoint (not including defrost)
pct_time_temp_cooling	66.38	64.74	Percentage of time temperature was observed dropping or remaining constant
max_pulldown_no_defrost	0.30	0.89	Maximum temperature decrease in degrees/minute (between defrost cycles)
min_offset	1.85	0.84	Closest case temperature relative to setpoint
max_offset	7.32	19.02	Maximum case temperature above setpoint
run_cycle_interval	1156.66	1015.58	Average interval (in minutes) between run cycles
run_cycles_hour	0.05	0.09	Average number of run cycles per hour
noise_no_defrost	17.18	52.44	Noise of temperature curve measured in observed temperature directional changes
frequency_no_defrost	14.57	26.67	Frequency of temperature curve.

num_workorders_last_30	0.00		Number of work orders associated with this case in the last 30 days
num_workorders_open	0.00		Number of open work orders associated with this case
Defrost			
average_defrost_recovery_duration	103.32	84.40	Average time (in minutes) for temperature to stabilize after defrost off command
stdev_defrost_recovery_duration	5.77	19.41	Standard deviation of defrost recovery time
average_defrost_recovery_temp	4.17	2.10	Average temperature reached after defrost recovery
stdev_defrost_recovery_temp	0.29	1.06	Standard deviation of defrost recovery temperature
average_defrost_start_temp	-4.50	-5.86	Average temperature at start of defrost
stdev_defrost_start_temp	2.45	6.66	Standard deviation of defrost start temperature
average_max_defrost_temp	43.48	42.16	Average max temperature reached during defrost
stdev_max_defrost_temp	1.44	3.12	Standard deviation of maximum defrost temperature
average_time_between_defrost	1399.98	1307.76	Average time (in minutes) elapsed between defrost commands
max_defrost_pulldown	2.49	3.10	Maximum observed temperature decrease in degrees/minute
Mechanical			
average_suction_pressure_sensor	8.08	11.94	Average suction pressure in lbs
stdev_suction_pressure_sensor	1.72	6.76	Standard deviation of suction pressure
average_discharge_pressure_sensor	191.90	200.07	Average discharge pressure in lbs
stdev_discharge_pressure_sensor	26.13	19.61	Standard deviation of discharge pressure
average_dropleg_temperature_sensor	91.09	82.82	Average liquid temperature at discharge
stdev_dropleg_temperature_sensor	9.03	14.30	Standard deviation of dropleg temperature
Circuit Siblings			
sibling_count	4.00		Number of cases available on this circuit
average_sibling_health_percentile	0.08		Average health percentile of cases on this circuit
stdev_sibling_health	1.52		Standard deviation of sibling health
average_sibling_temperature	-5.08		Average operating temperature of all siblings

Work Order Summary for this Case/Rack (Last 30 days - when explicitly referenced)

Date Created	ID	Asset	Status	Extended	Created By	Problem	Description
10/3/2021	189108355	Rack	COMPLETED	Pending Confirmation	lot Api User	P3-Onsite W/ 3 Days	HOME OFFICE ONLY Refrigeration - HQ Use Only R (more)
9/28/2021	188581717	Rack	COMPLETED	Hvac/R Tech Complete	lot Api User	P2-Onsite W/ 48 Hours	HOME OFFICE ONLY Refrigeration - HQ Use Only C (more)