

Walmart Perspective (Techs)

Bret Weinstock

Home Page and Tech Store Portfolio

tech assist Home

Home | Store Viewer | Rack Viewer | Case Viewer | Store History | Data Status | Leader Board | Explorer

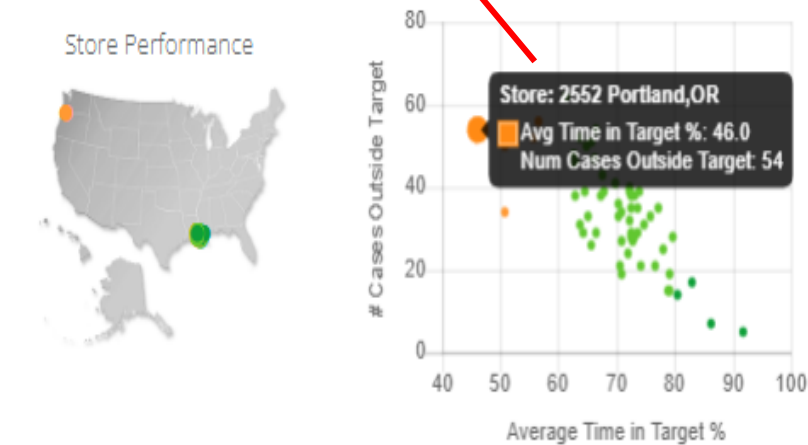
Welcome Back!
bret.weinstock@walmart.com

Recent Messages...

Message posted: 9/27/2021, 8:55:24 PM

IMPORTANT: As of 9/28, the calculation of "percent time in target" has been updated across all pages of Tech Assist. Cases and rack

My Tech Assist Stores



59 # Stores

69.9% Avg. Time in Temperature

1959 # Cases Outside of Target

Edit Your Store List

Create and edit your custom Tech Assist store list.

- There are 59 stores in your list: Clear All
- 1163 New Orleans, LA
 - 1206 Baton Rouge, LA
 - 1342 Kenner, LA
 - 1353 Harahan, LA
 - 2132 Baton Rouge, LA
 - 2552 Portland, OR
 - 2665 Slidell, LA
 - 2706 Harvey, LA
 - 2822 Walker, LA
 - 2913 Boutte, LA

Store #(s) to add

To add stores to your list, enter the store number(s) above and select Add. Or, select "Find My Stores" to auto-load the list using Tech Assist's store alignment information

Store	Link	Time in Target %	30 Day % Trend	# Cases Outside Target
2552 Portland, OR	[Click to View]	46.0		54/118

Store View > Actionable Data

tech assist Store Performance Analysis

Home Store Viewer Rack Viewer Case Viewer Store History Data Status Leader Board

Store: 2552 For period ending: Thu, 07 Oct 2021 View

100.0 Overall Rack Score

13% Time in Target


100.0 Superheat Score

7 Open Work Orders

Store: 2552 Portland, OR
Date range: Tue Oct 05 2021 - Thu Oct 07 2021 Data Source: IoT

46%
This Store's Average Time in Target %

Supercenter
Portland, OR
Store #: 2552
Ops Region Number: 60
FM Region/Subregion: 12-19
Business Model: CBRE



Performance Overview

118 cases

- 56 Very Unhealthy
- 11 Unhealthy
- 15 Healthy
- 36 Very Healthy

56 ↑ # of cases with avg. temps outside target temp band

Rack Performance

A	B	C
[LTA] Opus	[LTA] Opus	[MTC] Opus
Number cases: 14 Time in Target: 41%	Number cases: 33 Time in Target: 13%	Number cases: 26 Time in Target: 61%

Circuit Performance

Circuit	# Cases	% Time in Target	Setpoint°	Avg Offset°	Case Performance
b12	2	0	-2	12	b12a b12b
b09	3	0	-5	8	b09a b09b b09c
b08	3	0	-5	6	b08a b08b b08c
b13	1	0	-2	12	b13a
b11	2	0	-5	11	b11a b11b
b03	3	1	-5	6	b03a b03b b03c
b10	1	6	-2	6	b10a
b04	3	11	-5	5	b04a b04b b04c
b05	4	13	-5	6	b05a b05b b05c b05d
b07	3	18	-5	5	b07a b07b b07c
b02	4	20	-5	6	b02a b02b b02c b02d
b06	3	36	-5	4	b06a b06b b06c
b01	1	98	-2	1	b01a

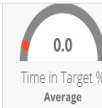
Compressor Performance

Id	Run Time	% Time in Lockout	# Lockouts*	% Time in Proof Failure
vs	0.0%	0.0%	0	0.0%
1	100.0%	0.0%	0	0.0%
2	100.0%	0.0%	0	0.0%
3	100.0%	0.0%	0	0.0%
4	100.0%	0.0%	0	0.0%
5	96.6%	0.0%	0	0.0%
6	21.3%	0.0%	0	0.0%
7	0.0%	0.0%	0	0.0%

* Number observed over analysis period

Individual rack downstream assets

A	B	C	D	E
[LTA] Opus	[LTB] Opus	[MTC] Opus	[MTD] Opus	[MTE] Opus
Number cases: 14	Number cases: 33	Number cases: 26	Number cases: 22	Number cases: 23
Time in Target: 41%	Time in Target: 13%	Time in Target: 61%	Time in Target: 72%	Time in Target: 54%



Observations: 2

- > AVERAGE CASE TEMPERATURE IS WELL OUTSIDE TARGET BAND (HIGH).
- > CASE IS OPERATING ABOVE AVERAGE TEMPERATURE FOR THIS CASE CLASS.
- > THERE ARE ONE OR MORE OPEN WORK ORDERS ASSOCIATED WITH THE RACK FOR THIS CASE. [View Details](#)
- > DEFROST RECOVERY TIME EXCEEDS THE NORMAL RANGE FOR THIS CASE CLASS.

[View Quick Look Report](#)

Refrigeration Cases

Table Filters

Rack: **B**

Circuit: All

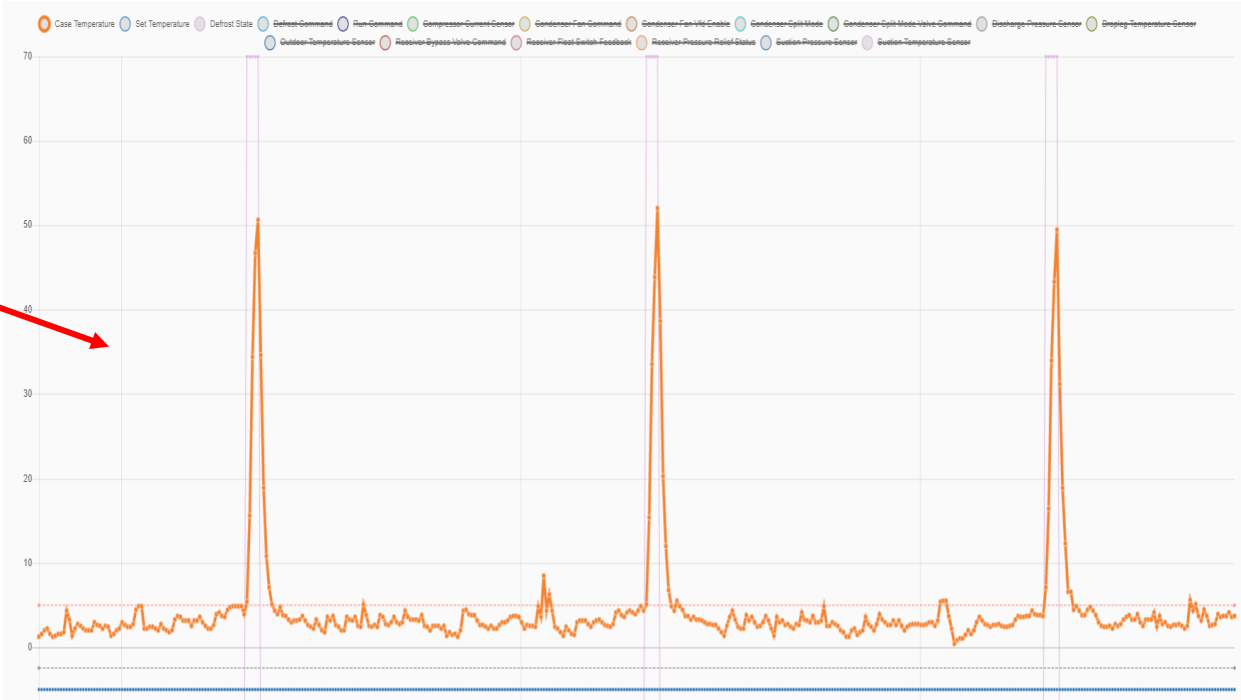
Contents: All

In Target: All

Observation: All

33 cases displayed [Reset Filters](#)

Case	Label	Target%	Viewer Link	Class
b04b	B04b FF DRS	0%	[Click to View]	low tem
b12a	B12a GROC FZR	0%	[Click to View]	low tem
b09b	B09b FF DRS	0%	[Click to View]	low tem
b12b	B12b GROC FZR	0%	[Click to View]	low tem
b07c	B07c FF DRS	0%	[Click to View]	low tem
b07b	B07b FF DRS	0%	[Click to View]	low tem
b09a	B09a FF DRS	0%	[Click to View]	low tem
b08a	B08a FF DRS	0%	[Click to View]	low tem
b05b	B05b FF DRS	0%	[Click to View]	low tem
b13a	B13a GROC FZR	0%	[Click to View]	low tem
b11a	B11a FF DRS	0%	[Click to View]	low tem
b02a	B02a FF DRS	0%	[Click to View]	low tem
b05a	B05a FF DRS	0%	[Click to View]	low temp door frozen food
b11b	B11b FF DRS	0%	[Click to View]	low temp door frozen food
b08b	B08b FF DRS	0%	[Click to View]	low temp door frozen food



Attached SC WO Info/Case Performance -

Work Order Summary (Last 30 days)

Date Created	ID	Status	Extended	Created By	Problem	Description	Assets Referenced
10/6/2021	189317971	IN PROGRESS	Dispatch Confirmed	lot Api User	P1-Onsite W/1 24 Hours	Work Order Details	A C a02a a02b a05a a05b a07a a08a
10/4/2021	189193346	COMPLETED	Pending Confirmation	lot Api User	Pe-Emergency-Onsite W/1 4 Hours	Service Channel ID: 189317971	B b02a b02b b03b b04b b05a b05b b06c b07c b08a b08c b09a b09b b11a b11b b12a b12b b13a
10/4/2021	189169589	COMPLETED	Confirmed	lot Api User	Pe-Emergency-Onsite W/1 4 Hours	Status: IN PROGRESS	A C a01b a01c a02b a02c a07a
10/3/2021	189136613	COMPLETED	Confirmed	lot Api User	Pe-Emergency-Onsite W/1 4 Hours	Created By: iOT API User	B b02a b02b b03b b04b b05a b05b b06c b07b b07c b08a b08c b09a b09b b09c b10a b11a b11b b12a b12b b13a
10/2/2021	189095813	COMPLETED	Confirmed	lot Api User	P1-Onsite W/1 24 Hours	Date Created: 10/6/2021	A C a07a
10/2/2021	189080930	COMPLETED	Confirmed	Fix It Api	P7-Onsite W/1 7 Days	HOME OFFICE ONLY Refrigeration - HO Use Only Case - Multiple Cases High Temperature Raised By: Neijab Smallwood Contact: MOD Position: ASM Units Affected: 5 Rack Associated: LTA Systems Affected: CMS026 / A05b DT CFN / 22.7 °F,CMS029 / A07a DT CFN / 11.5 °F,CMS020 / A02b IC DRS / 7.3 °F,CMS019 / A02a IC DRS / 5.1 °F,CMS031 / A08a IC FZR / -1.8 °F Alarm Message: Multi Case	A E

Work Order Details

Service Channel ID: 189317971

Status: IN PROGRESS

Created By: iOT API User

Date Created: 10/6/2021

HOME OFFICE ONLY | Refrigeration - HO Use Only | Case - Multiple Cases | High Temperature | Raised By: Neijab Smallwood | Contact: MOD | Position: ASM | Units Affected: 5 | Rack Associated: LTA | Systems Affected: CMS026 / A05b DT CFN / 22.7 °F,CMS029 / A07a DT CFN / 11.5 °F,CMS020 / A02b IC DRS / 7.3 °F,CMS019 / A02a IC DRS / 5.1 °F,CMS031 / A08a IC FZR / -1.8 °F | Alarm Message: Multi Case

IN PROGRESS
DISPATCH CONFIRMED

HIGH TEMPERATURE
HOME OFFICE ONLY / REFRIGERATION - HO USE ONLY / CASE - MULTIPLE CASES

FM - REFRIGERATION TRADE P1-ONSITE W/1 24 HOURS PRIORITY REPAIR - REACTIVE CATEGORY

188275447 Tracking **13 Days 9 Hrs** 20,000.00 USD NTE

13170872 Work Order Oct 01 2021 16:30 PST Scheduled 4102186 GL Code

188275451 Purchase Order Sep 28 2021 07:00 PST Orig. ETA WEB API Client: IoT Source

Neijab Smallwood

2552 (60 - 476)
Supercenter FM Reg 12-19
4200 SE 82ND AVE
PORTLAND OR 97266 US
(503) 788-0200
CHARLES HOGENDYK

CBRE Global Workplace Solutions
Mike Grosko
WM5C@cbre.com



Attached SC WO Case Performance – Asset



Store/Case: **2552 b03b** **Supercenter** IOT
 Case Label: **B03b FF DRS** Ops Region Number: 60
 Analysis Date: **Sat Sep 25 2021** FM Region/Subregion: 12-19
 Business Model: CBRE

2.8°

Average case temperature

-5.0°

Case target set point

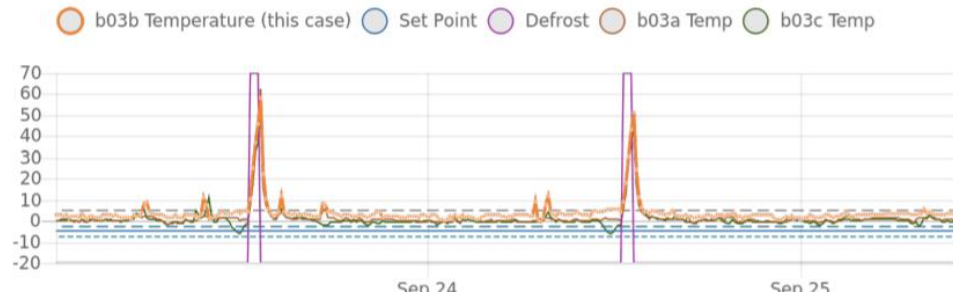
0%

Percentage of time operating within 2.5° of target temperature

Details

Temp	low temp	Avg Temp Offset	7.8°
Type	door	Pct Time in Target	0.0%
Contents	frozen food	Defrost Cycle Period	23.5 hours

Circuit Telemetry (48 hour period)



Asset Tag: **L2019-957112** Manufacturer: **HUSSMANN**
 Serial Number: **MY12G063635** Model: **RLNI**

frozen food	
Target Temp:	-5°
Cut In Temp:	-3°
Cut Out Temp:	-7°
Super Heat:	4-7
Saturated Suction Temp:	-11°
Defrost Type:	EL
Defrost Term Type:	RH END OF COIL
Defrost Term Temp:	60°
Defrost / Day:	1
Defrost Time (min):	45
Drain Delay (min):	0
Evap Fan Delay (min):	0
Air Velocity (cfm):	275

ice cream	
Target Temp:	-12°
Cut In Temp:	-10°
Cut Out Temp:	-14°
Super Heat:	4-7
Saturated Suction Temp:	-19°
Defrost Type:	EL
Defrost Term Type:	RH END OF COIL
Defrost Term Temp:	60°
Defrost / Day:	1
Defrost Time (min):	45
Drain Delay (min):	0
Evap Fan Delay (min):	0
Air Velocity (cfm):	275

Tech Assist Observations

- CASE IS OPERATING ABOVE AVERAGE TEMPERATURE FOR THIS CASE CLASS.
- AVERAGE CASE TEMPERATURE IS WELL OUTSIDE TARGET BAND (HIGH).
- DEFROST RECOVERY TIME EXCEEDS THE NORMAL RANGE FOR THIS CASE CLASS.
- THERE ARE ONE OR MORE OPEN WORK ORDERS ASSOCIATED WITH THE RACK FOR THIS CASE.

Rack Overview (48 hour period)

Rack: **B** (Label: **LTB**) Opus

Details:

Num Circuits	13
Num Cases	33
Num Cases in Target	2
Num Compressors	8
Num Compressors in Lockout	0
Average Suction Pressure	14.0 psi
Average Discharge Pressure	195.2 psi

Compressors:

Id	Run Time	Lockout Status	Cycles /day*
vs	0%	-	0
1	100%	-	0
2	100%	-	0
3	100%	-	0
4	100%	-	0
5	100%	-	0
6	72.7%	-	2
7	10.63%	-	1

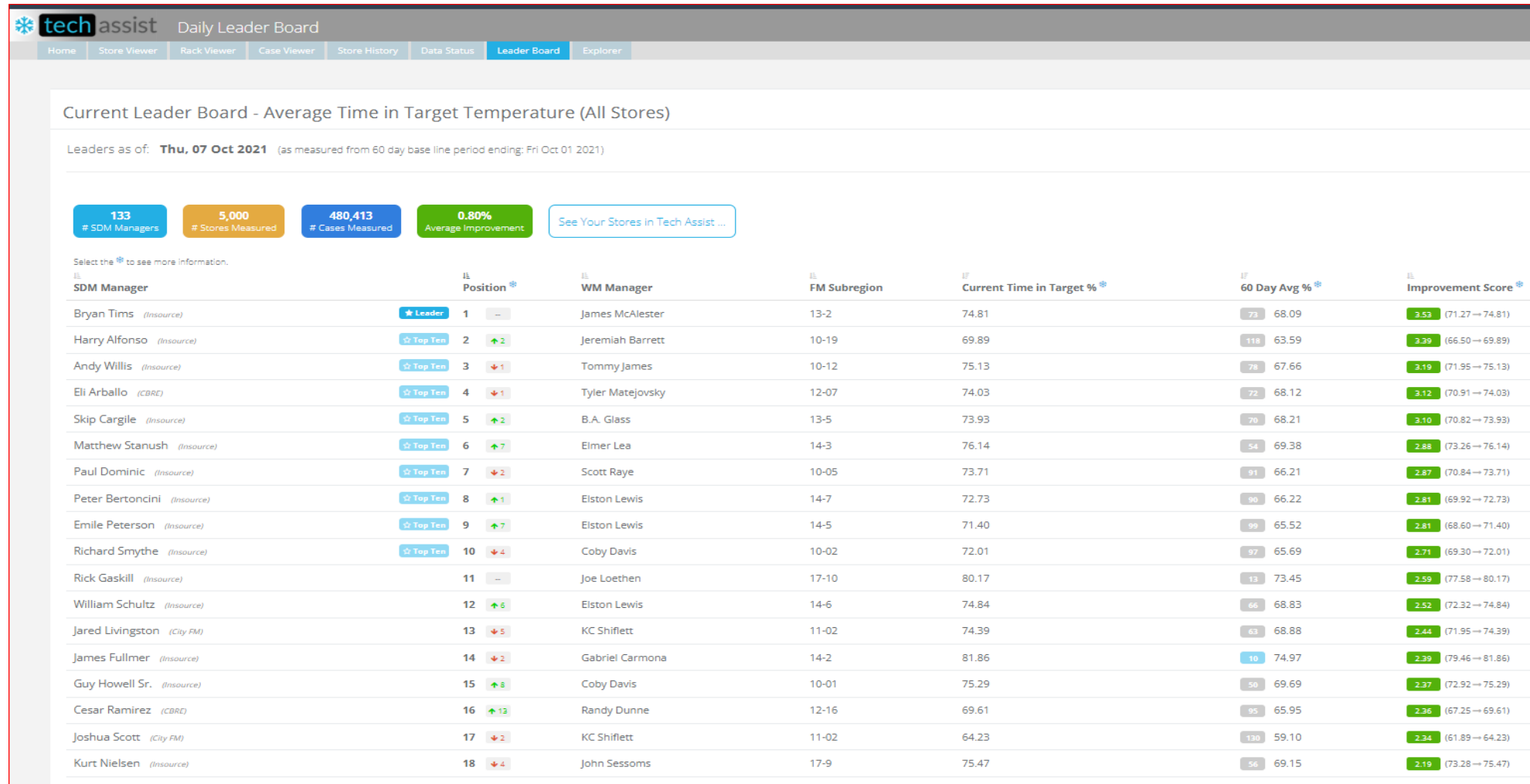
* Observed

Circuits:

Walmart Perspective (Managers)

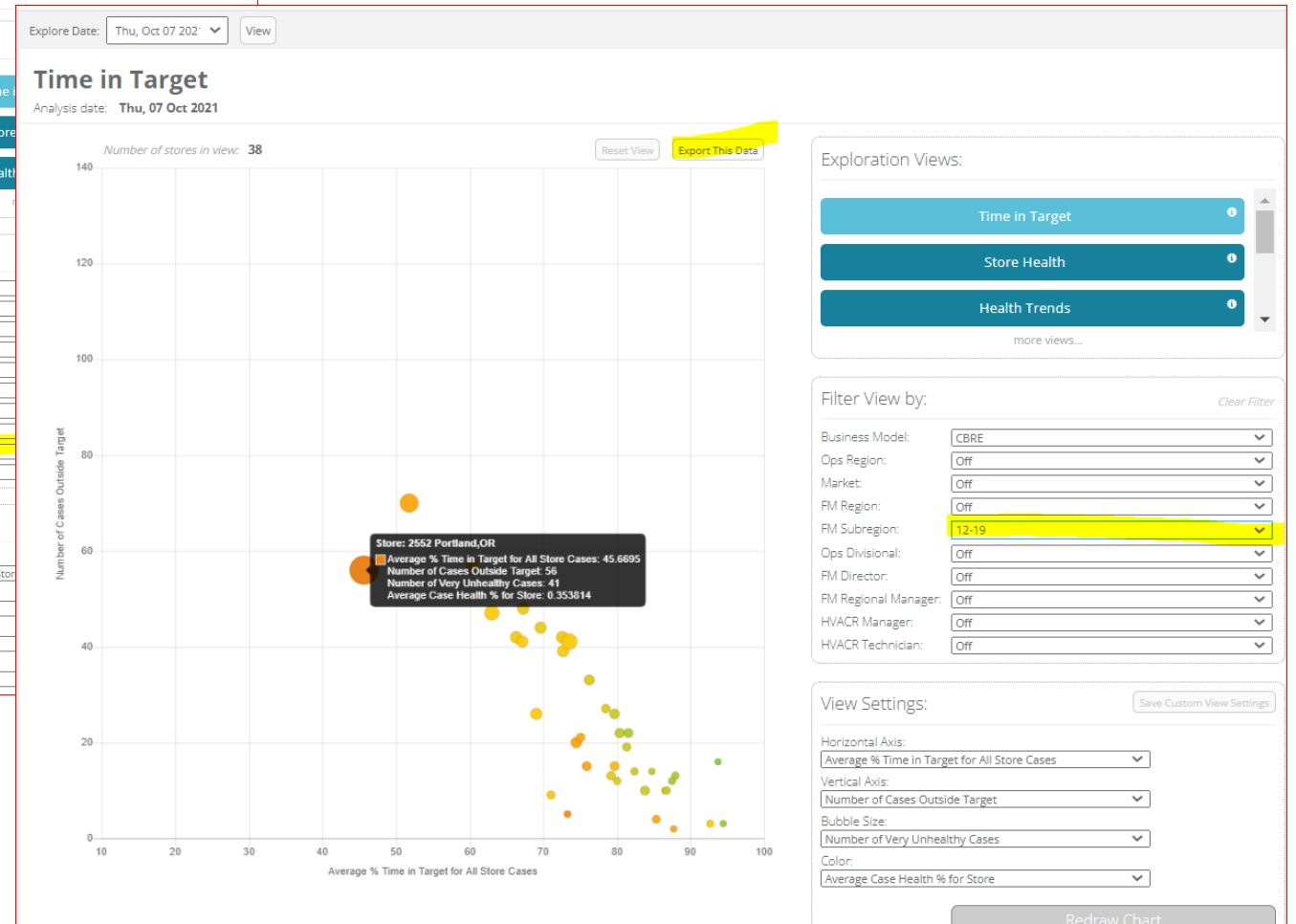
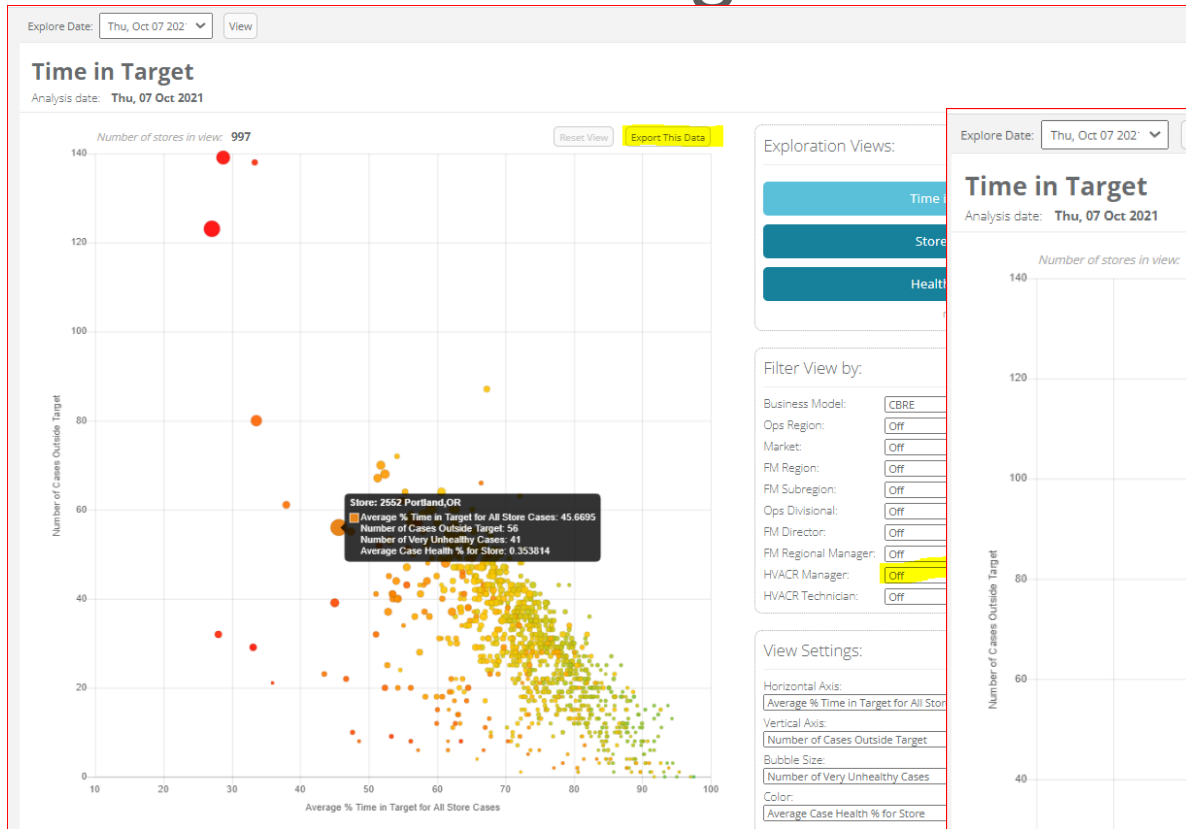
Bret Weinstock

Leaderboard Portfolio's and SDM suggestions



- The Leaderboard helped drive adoption over past 6-9 Months – Insource environment improved June <> September avg of 3.5 % points across our 2195 Stores approx 220K Assets.

Actionable Manager Data



Exported Data for focused engagement

- The IoT/IMS “EM” alarm rules are 10’ > Target for extended duration prior to automating and/or dropping alarm in queues. The TAT platform provides visibility to assets that are outside target “May not be in Alarm”. MT Food Degrades well below the Alarm Threshold’s

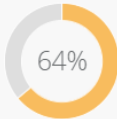
store_numbe	city	state	business_mode	region_numbe	market_numbe	fm_regior	fm_subregio	ops_division	fm_director	fm_regional_manage	hvacr_manager	pct_time_in_target	num_very_unhealth	num_cases_outside_target
2552	Portland	OR	CBRE	60	476	12	12-19	Paul Lewellen	Samantha Madrid	Matt Throndsen	CBRE-OPEN-MGR	45.6695	41	56
1793	Woodburn	OR	CBRE	60	477	12	12-19	Paul Lewellen	Samantha Madrid	Matt Throndsen	CBRE-OPEN-MGR	51.7407	32	70
1880	Coos Bay	OR	CBRE	56	468	12	12-19	Paul Lewellen	Samantha Madrid	Matt Throndsen	CBRE-OPEN-MGR	60.2345	15	57
1910	Crescent City	CA	CBRE	56	457	12	12-19	Paul Lewellen	Samantha Madrid	Matt Throndsen	CBRE-OPEN-MGR	63.0085	22	47
3258	Eugene	OR	CBRE	60	478	12	12-19	Paul Lewellen	Samantha Madrid	Matt Throndsen	CBRE-OPEN-MGR	66.3093	14	42
5424	Eagle Point	OR	CBRE	56	468	12	12-19	Paul Lewellen	Samantha Madrid	Matt Throndsen	CBRE-OPEN-MGR	67.1603	13	41
1834	Grants Pass	OR	CBRE	56	468	12	12-19	Paul Lewellen	Samantha Madrid	Matt Throndsen	CBRE-OPEN-MGR	67.25	14	48
2477	Roseburg	OR	CBRE	56	468	12	12-19	Paul Lewellen	Samantha Madrid	Matt Throndsen	CBRE-OPEN-MGR	69.0678	13	26
1775	Lebanon	OR	CBRE	60	478	12	12-19	Paul Lewellen	Samantha Madrid	Matt Throndsen	CBRE-OPEN-MGR	69.5909	13	44
5440	Happy Valley	OR	CBRE	60	477	12	12-19	Paul Lewellen	Samantha Madrid	Matt Throndsen	CBRE-OPEN-MGR	71	5	9
3239	Springfield	OR	CBRE	60	478	12	12-19	Paul Lewellen	Samantha Madrid	Matt Throndsen	CBRE-OPEN-MGR	72.6294	15	42
2537	Redding	CA	CBRE	56	457	12	12-19	Paul Lewellen	Samantha Madrid	Matt Throndsen	CBRE-OPEN-MGR	72.719	13	39
1616	Susanville	CA	CBRE	56	457	12	12-19	Paul Lewellen	Samantha Madrid	Matt Throndsen	CBRE-OPEN-MGR	73.3125	1	5
5396	Albany	OR	CBRE	60	478	12	12-19	Paul Lewellen	Samantha Madrid	Matt Throndsen	CBRE-OPEN-MGR	73.5103	25	41
1925	Newport	OR	CBRE	60	478	12	12-19	Paul Lewellen	Samantha Madrid	Matt Throndsen	CBRE-OPEN-MGR	74.4157	11	20
5839	Medford	OR	CBRE	56	468	12	12-19	Paul Lewellen	Samantha Madrid	Matt Throndsen	CBRE-OPEN-MGR	75.113	6	21
5629	Eureka	CA	CBRE	56	457	12	12-19	Paul Lewellen	Samantha Madrid	Matt Throndsen	CBRE-OPEN-MGR	75.9	7	15
5133	Anderson	CA	CBRE	56	457	12	12-19	Paul Lewellen	Samantha Madrid	Matt Throndsen	CBRE-OPEN-MGR	76.2424	10	33
2069	Medford	OR	CBRE	56	468	12	12-19	Paul Lewellen	Samantha Madrid	Matt Throndsen	CBRE-OPEN-MGR	78.5362	6	27
5627	Gresham	OR	CBRE	61	550	12	12-19	Kelvin Buncum	Samantha Madrid	Matt Throndsen	CBRE-OPEN-MGR	79.1975	6	13
2320	Cottage Grove	OR	CBRE	56	468	12	12-19	Paul Lewellen	Samantha Madrid	Matt Throndsen	CBRE-OPEN-MGR	79.6923	7	15
1608	Red Bluff	CA	CBRE	56	457	12	12-19	Paul Lewellen	Samantha Madrid	Matt Throndsen	CBRE-OPEN-MGR	79.7068	9	26
3050	Beaverton	OR	CBRE	61	550	12	12-19	Kelvin Buncum	Samantha Madrid	Matt Throndsen	CBRE-OPEN-MGR	80.0761	3	12
1784	Salem	OR	CBRE	60	477	12	12-19	Paul Lewellen	Samantha Madrid	Matt Throndsen	CBRE-OPEN-MGR	80.3986	8	22
2075	Bend	OR	CBRE	60	478	12	12-19	Paul Lewellen	Samantha Madrid	Matt Throndsen	CBRE-OPEN-MGR	81.3525	5	19
4221	Cornelius	OR	CBRE	60	477	12	12-19	Paul Lewellen	Samantha Madrid	Matt Throndsen	CBRE-OPEN-MGR	81.6174	7	22
1630	Yreka	CA	CBRE	56	457	12	12-19	Paul Lewellen	Samantha Madrid	Matt Throndsen	CBRE-OPEN-MGR	82.3548	3	14
3146	Corvallis	OR	CBRE	61	550	12	12-19	Kelvin Buncum	Samantha Madrid	Matt Throndsen	CBRE-OPEN-MGR	83.8406	7	10
2590	Hillsboro	OR	CBRE	61	550	12	12-19	Kelvin Buncum	Samantha Madrid	Matt Throndsen	CBRE-OPEN-MGR	84.7579	0	14
2538	Eugene	OR	CBRE	60	478	12	12-19	Paul Lewellen	Samantha Madrid	Matt Throndsen	CBRE-OPEN-MGR	85.3333	4	4
1920	Salem	OR	CBRE	60	477	12	12-19	Paul Lewellen	Samantha Madrid	Matt Throndsen	CBRE-OPEN-MGR	86.5349	1	10
3178	Gresham	OR	CBRE	61	550	12	12-19	Kelvin Buncum	Samantha Madrid	Matt Throndsen	CBRE-OPEN-MGR	86.7475	3	10

- Create proactive WO’s for the low performing stores – Suggest the MT as throws/markdowns @ higher risk
- Suggest loading you’re your portfolio of stores in the Home Page – Next Slide

- PM's - Pre/Post Time in Target

Store: **5211** Mckinney, TX

Historical Date Range Available: **Wed, 01 Jan 2020 - Mon, 03 May 2021**



64%
Current Health Percentile

Supercenter
Mckinney, TX
Store #: 5211
Ops Region Number: 5
FM Region/Subregion: 10-3
Business Model: Insource

Store Performance Comparison

Enter two dates to analyze and compare performance for the selected store over the desired time period

Comparison start date:

Comparison end date:

[Analyze Range](#)

Performance History

Percent time in target (+/- 2.5 degrees, average all cases, daily)

↑ Trend

61
Num samples

82.0%
Average

13.8↑
Change

19.1%↑
% Change

72.0%
Minimum

86.0%
Maximum

low
Volatility

Values shown are calculated using comparison dates specified above (gray shaded area below)



< > + -
Last 30 Days
Last 90 Days
Last Year
All Available

Store View > Actionable Data

tech assist Store Performance Analysis

Home Store Viewer Rack Viewer Case Viewer Store History Data Status Leader Board

Store: 2552 For period ending: Thu, 07 Oct 2021 View

100.0 Overall Rack Score

13% Time in Target

100.0 Superheat Score

7 Open Work Orders

Store: 2552 Portland, OR

Date range: Tue Oct 05 2021 - Thu Oct 07 2021 Data Source: IoT

46% This Store's Average Time in Target

Supercenter
Portland, OR
Store #: 2552
Ops Region Number: 60
FM Region/Subregion: 12-19
Business Model: CBRE

Performance Overview



Rack Performance

A	B	C
[LTA] Opus	[LTA] Opus	[MTC] Opus
Number cases: 14	Number cases: 33	Number cases: 26
Time in Target: 41%	Time in Target: 13%	Time in Target: 61%

Circuit Performance

Circuit	# Cases	% Time in Target	Setpoint°	Avg Offset°	Case Performance
b12	2	0	-2	12	b12a b12b
b09	3	0	-5	8	b09a b09b b09c
b08	3	0	-5	6	b08a b08b b08c
b13	1	0	-2	12	b13a
b11	2	0	-5	11	b11a b11b
b03	3	1	-5	6	b03a b03b b03c
b10	1	6	-2	6	b10a
b04	3	11	-5	5	b04a b04b b04c
b05	4	13	-5	6	b05a b05b b05c b05d
b07	3	18	-5	5	b07a b07b b07c
b02	4	20	-5	6	b02a b02b b02c b02d
b06	3	36	-5	4	b06a b06b b06c
b01	1	98	-2	1	b01a

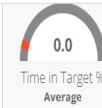
Compressor Performance

Id	Run Time	% Time in Lockout	# Lockouts*	% Time in Proof Failure
vs	0.0%	0.0%	0	0.0%
1	100.0%	0.0%	0	0.0%
2	100.0%	0.0%	0	0.0%
3	100.0%	0.0%	0	0.0%
4	100.0%	0.0%	0	0.0%
5	96.6%	0.0%	0	0.0%
6	21.3%	0.0%	0	0.0%
7	0.0%	0.0%	0	0.0%

* Number observed over analysis period

Individual rack downstream assets

A	B	C	D	E
[LTA] Opus	[LTB] Opus	[MTC] Opus	[MTD] Opus	[MTE] Opus
Number cases: 14	Number cases: 33	Number cases: 26	Number cases: 22	Number cases: 23
Time in Target: 41%	Time in Target: 13%	Time in Target: 61%	Time in Target: 72%	Time in Target: 54%



Observations: 2

- > AVERAGE CASE TEMPERATURE IS WELL OUTSIDE TARGET BAND (HIGH).
- > CASE IS OPERATING ABOVE AVERAGE TEMPERATURE FOR THIS CASE CLASS.
- > THERE ARE ONE OR MORE OPEN WORK ORDERS ASSOCIATED WITH THE RACK FOR THIS CASE. [View Details](#)
- > DEFROST RECOVERY TIME EXCEEDS THE NORMAL RANGE FOR THIS CASE CLASS.

[View Quick Look Report](#)

Refrigeration Cases

Table Filters

Rack: **B**

Circuit: All

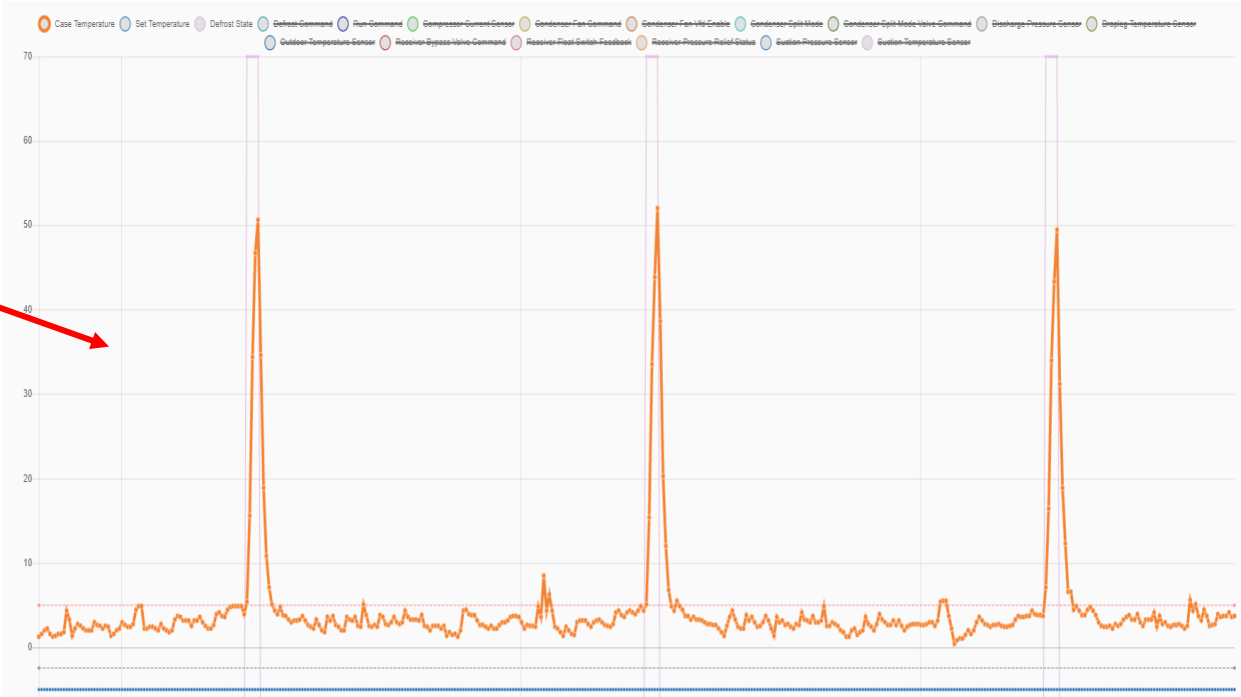
Contents: All

In Target: All

Observation: All

33 cases displayed [Reset Filters](#)

Case ID	Label	Target%	Viewer Link	Class
b04b	B04b FF DRS	0%	[Click to View]	low tem
b12a	B12a GROC FZR	0%	[Click to View]	low tem
b09b	B09b FF DRS	0%	[Click to View]	low tem
b12b	B12b GROC FZR	0%	[Click to View]	low tem
b07c	B07c FF DRS	0%	[Click to View]	low tem
b07b	B07b FF DRS	0%	[Click to View]	low tem
b09a	B09a FF DRS	0%	[Click to View]	low tem
b08a	B08a FF DRS	0%	[Click to View]	low tem
b05b	B05b FF DRS	0%	[Click to View]	low tem
b13a	B13a GROC FZR	0%	[Click to View]	low tem
b11a	B11a FF DRS	0%	[Click to View]	low tem
b02a	B02a FF DRS	0%	[Click to View]	low tem
b05a	B05a FF DRS	0%	[Click to View]	low temp door frozen food
b11b	B11b FF DRS	0%	[Click to View]	low temp door frozen food
b08b	B08b FF DRS	0%	[Click to View]	low temp door frozen food



Attached SC WO Info/Case Performance -

Work Order Summary (Last 30 days)

Date Created	ID	Status	Extended	Created By	Problem	Description	Assets Referenced
10/6/2021	189317971	IN PROGRESS	Dispatch Confirmed	lot Api User	P1-Onsite W/1 24 Hours	Work Order Details	A C a02a a02b a05a a05b a07a a08a
10/4/2021	189193346	COMPLETED	Pending Confirmation	lot Api User	Pe-Emergency-Onsite W/1 4 Hours	Service Channel ID: 189317971	B b02a b02b b03b b04b b05a b05b b06c b07c b08a b08c b09a b09b b11a b11b b12a b12b b13a
10/4/2021	189169589	COMPLETED	Confirmed	lot Api User	Pe-Emergency-Onsite W/1 4 Hours	Status: IN PROGRESS	A C a01b a01c a02b a02c a07a
10/3/2021	189136613	COMPLETED	Confirmed	lot Api User	Pe-Emergency-Onsite W/1 4 Hours	Created By: iOT API User	B b02a b02b b03b b04b b05a b05b b06c b07b b07c b08a b08c b09a b09b b09c b10a b11a b11b b12a b12b b13a
10/2/2021	189095813	COMPLETED	Confirmed	lot Api User	P1-Onsite W/1 24 Hours	Date Created: 10/6/2021	A C a07a
10/2/2021	189080930	COMPLETED	Confirmed	Fix It Api	P7-Onsite W/1 7 Days	HOME OFFICE ONLY Refrigeration - HO Use Only Case - Multiple Cases High Temperature Raised By: Neijab Smallwood Contact: MOD Position: ASM Units Affected: 5 Rack Associated: LTA Systems Affected: CMS026 / A05b DT CFN / 22.7 °F,CMS029 / A07a DT CFN / 11.5 °F,CMS020 / A02b IC DRS / 7.3 °F,CMS019 / A02a IC DRS / 5.1 °F,CMS031 / A08a IC FZR / -1.8 °F Alarm Message: Multi Case	A E

Work Order Details

Service Channel ID: 189317971

Status: IN PROGRESS

Created By: iOT API User

Date Created: 10/6/2021

HOME OFFICE ONLY | Refrigeration - HO Use Only | Case - Multiple Cases | High Temperature | Raised By: Neijab Smallwood | Contact: MOD | Position: ASM | Units Affected: 5 | Rack Associated: LTA | Systems Affected: CMS026 / A05b DT CFN / 22.7 °F,CMS029 / A07a DT CFN / 11.5 °F,CMS020 / A02b IC DRS / 7.3 °F,CMS019 / A02a IC DRS / 5.1 °F,CMS031 / A08a IC FZR / -1.8 °F | Alarm Message: Multi Case

IN PROGRESS
DISPATCH CONFIRMED

HIGH TEMPERATURE
HOME OFFICE ONLY / REFRIGERATION - HO USE ONLY / CASE - MULTIPLE CASES

FM - REFRIGERATION TRADE P1-ONSITE W/1 24 HOURS PRIORITY REPAIR - REACTIVE CATEGORY

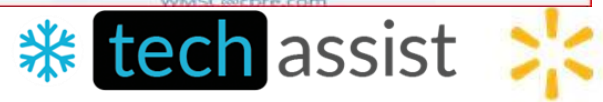
188275447 Tracking **13 Days 9 Hrs** 20,000.00 USD NTE

13170872 Work Order Oct 01 2021 16:30 PST Scheduled 4102186 GL Code

188275451 Purchase Order Sep 28 2021 07:00 PST Orig. ETA WEB API Client: IoT Source

Neijab Smallwood 2552 (60 - 476) Supercenter FM Reg 12-19 4200 SE 82ND AVE PORTLAND OR 97266 US (503) 788-0200 CHARLES HOGENDYK

CBRE Global Workplace Solutions
Mike Grosko
WM5C@cbre.com



Attached SC WO Case Performance – Asset



Store/Case: **2552 b03b** **Supercenter** IOT
 Case Label: **B03b FF DRS** Ops Region Number: 60
 Analysis Date: **Sat Sep 25 2021** FM Region/Subregion: 12-19
 Business Model: CBRE

2.8°

Average case temperature

-5.0°

Case target set point

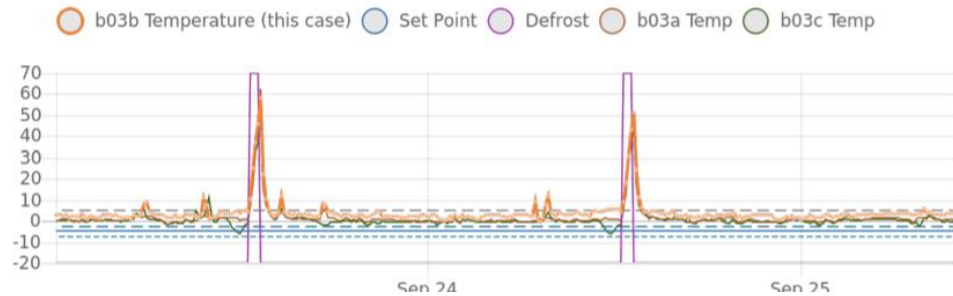
0%

Percentage of time operating within 2.5° of target temperature

Details

Temp	low temp	Avg Temp Offset	7.8°
Type	door	Pct Time in Target	0.0%
Contents	frozen food	Defrost Cycle Period	23.5 hours

Circuit Telemetry (48 hour period)



Asset Tag: **L2019-957112** Manufacturer: **HUSSMANN**
 Serial Number: **MY12G063635** Model: **RLNI**

frozen food	
Target Temp:	-5°
Cut In Temp:	-3°
Cut Out Temp:	-7°
Super Heat:	4-7
Saturated Suction Temp:	-11°
Defrost Type:	EL
Defrost Term Type:	RH END OF COIL
Defrost Term Temp:	60°
Defrost / Day:	1
Defrost Time (min):	45
Drain Delay (min):	0
Evap Fan Delay (min):	0
Air Velocity (cfm):	275

ice cream	
Target Temp:	-12°
Cut In Temp:	-10°
Cut Out Temp:	-14°
Super Heat:	4-7
Saturated Suction Temp:	-19°
Defrost Type:	EL
Defrost Term Type:	RH END OF COIL
Defrost Term Temp:	60°
Defrost / Day:	1
Defrost Time (min):	45
Drain Delay (min):	0
Evap Fan Delay (min):	0
Air Velocity (cfm):	275

Tech Assist Observations

- CASE IS OPERATING ABOVE AVERAGE TEMPERATURE FOR THIS CASE CLASS.
- AVERAGE CASE TEMPERATURE IS WELL OUTSIDE TARGET BAND (HIGH).
- DEFROST RECOVERY TIME EXCEEDS THE NORMAL RANGE FOR THIS CASE CLASS.
- THERE ARE ONE OR MORE OPEN WORK ORDERS ASSOCIATED WITH THE RACK FOR THIS CASE.

Rack Overview (48 hour period)

Rack: **B** (Label: **LTB**) Opus

Details:

Num Circuits	13
Num Cases	33
Num Cases in Target	2
Num Compressors	8
Num Compressors in Lockout	0
Average Suction Pressure	14.0 psi
Average Discharge Pressure	195.2 psi

Compressors:

Id	Run Time	Lockout Status	Cycles /day*
vs	0%	-	0
1	100%	-	0
2	100%	-	0
3	100%	-	0
4	100%	-	0
5	100%	-	0
6	72.7%	-	2
7	10.63%	-	1

* Observed

Circuits:

Home Page and Manager Store Portfolio

tech assist Home

Home | Store Viewer | Rack Viewer | Case Viewer | Store History | Data Status | Leader Board | Explorer

Welcome Back!
bret.weinstock@walmart.com

Recent Messages...
 * Message posted: 9/27/2021, 8:55:24 PM
 IMPORTANT: As of 9/28, the calculation of "percent time in target" has been updated across all pages of Tech Assist. Cases and rack

My Tech Assist Stores

Store Performance

Avg Time in Target %: 46.0
 Num Cases Outside Target: 54

59 # Stores | 69.9% Avg. Time in Temperature | 1959 # Cases Outside of Target

Edit Your Store List
 Create and edit your custom Tech Assist store list.

There are 59 stores in your list: [Clear All](#)

- 1163 New Orleans, LA
- 1206 Baton Rouge, LA
- 1342 Kenner, LA
- 1353 Harahan, LA
- 2132 Baton Rouge, LA
- 2552 Portland, OR
- 2665 Slidell, LA
- 2706 Harvey, LA
- 2822 Walker, LA
- 2913 Boutte, LA

Store #(s) to add

To add stores to your list, enter the store number(s) above and select Add. Or, select "Find My Stores" to auto-load the list using Tech Assist's store alignment information

Store	Link	Time in Target %	30 Day % Trend	# Cases Outside Target
2552 Portland, OR	[Click to View]	46.0		54/118

tech assist Training

Patrick Motola, Senior Partner, The Weghorst Group

Bret Weinstock, FM/Energy, Walmart US

October 2021