

equator
EQUATOR DESIGN
The Civic Opera House,
20 North Wacker Drive, Suite 2200,
Chicago, IL 60606
T: +1-312-991-0376
Email: info@equator-design.com
www.equator-design.com

The accuracy of this artwork is the responsibility of the SUPPLIER. This includes but not limited to regulatory requirements, copy, content, and placement in regards to the layout. Upon receipt of Supplier approval, Equator will not accept responsibility for the accuracy outlined above. Equator will not accept liability for loss or damage including print, press delays or other ancillary costs.

The PRINTER is responsible for: Verifying that the UPC code scans correctly when printed. Also to check for accuracy in measurements and layout details, prior to plates or cylinders.

Any change to the content of this artwork must be submitted back to the CLIENT for approval.

Client
Sams Club

Product Title MM CA Dark Chocolate Thins Pouch
Product MM CA Dark Chocolate Thins
Client Ref. TBD
Equator Ref. CHI-090906-001
Date 10.24.24

Version 2dr
Production Artist v1: MDS; v1a:KP; 1b: DD; v2: MDS; v2a: AG; v2b: JE; v2c: MDS; 2c: DD; 2dr: DD

Design Acc. Manager AM
Production Acc. Manager EK

New design based on ref. -
Update to previous ref. -
prev photo ref. -
range master ref. -

Supplier Georgia Nut Company
Printer Bema Incorporated
Proofing Profile Bema XPS IFFM Crystal Reverse 150
Substrate Reverse Printed Clear Film
Die Ref. 9_01 x 10_71 x 3_25 Pouch Dieline
Process Flexo
Max. No. Colors CMYK-6
Deliverable File Format Illustrator CC2019

Magnification: 100% BWR: .004"

Barcode No. as it appears in Octopus 193968461935

ARTWORK COLORS
CYAN PMS 541 C
MAGENTA PMS 4151 C
YELLOW PMS BLACK 6 C
BLACK

TECHNICAL LINKS
WHITE
MATTE VARNISH
SUBSTRATE

PRINTER COLOR MATCHING INFO
Pantone Colors: MATCH SPECTRALLY TO DIGITAL PANTONE LIBRARY
Brand Colors: MATCH SPECTRALLY TO CMYK DATA SUPPLIED WHERE APPLICABLE
Image / Process Elements: MATCH TO GMS PROOFED PROOF

Delta E Formula: Delta E2000
Tolerance: Delta E < 2.0
Illuminate: D50
Filter: None
Observer Angle: 2°
Recommended Device: X-Rite Exact
XREGA: Yes

Printers are expected to achieve these measurements regardless of substrate within a Delta E of less than 2.

customer signature: _____

Reminder: Due to font licensing, we cannot release fonts with live artwork files. Let your Account Handler know before file release if you require outlined files for release.

1.5625" to Zipper
1.125" to Tear Notch
0.5" Trim
10.71" Front Panel
0.125" Bottom Seal
3.25" Gusset
0.125" Bottom Seal
70.71" Back Panel
0.5" Trim
0.3125" Seal

9.01" Repeat

1" Top Seal
24.67" Web
25.67" Web to Pouch
1" Top Seal
0.3125" Seal

Member's Mark
DARK Chocolate THINS
WITH ALMONDS & SEA SALT

NO ARTIFICIAL COLORS OR FLAVORS
Sweet and savory dark chocolate thins with crispy crushed almonds and sea salt in perfectly unique snack sized pieces

NET WT 20 OZ (1 LB 4 OZ) 567 g

RESEALABLE BAG

Nutrition Facts
About 20 servings per container
Serving size 1/4 cup (28g)
Amount per serving
Calories 140
% Daily Value*

Total Fat	10g	13%
Saturated Fat	5g	25%
Trans Fat	0g	
Cholesterol	0mg	0%
Sodium	55mg	2%
Total Carbohydrate	15g	5%
Dietary Fiber	3g	9%
Total Sugars	11g	
Includes 10g Added Sugars		21%
Protein	2g	
Vitamin D	0mcg	0%
Calcium	0mg	0%
Iron	2.5mg	15%
Potassium	160mg	4%

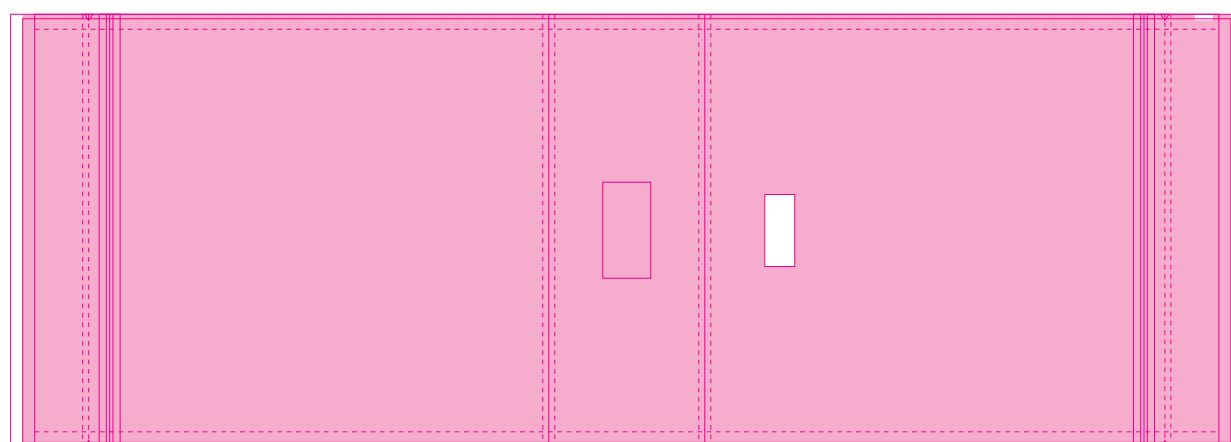
INGREDIENTS: DARK CHOCOLATE (SUGAR, CHOCOLATE LIQUOR, COCOA BUTTER, CHOCOLATE LIQUOR PROCESSED WITH ALKALI, SOY LECITHIN, NATURAL VANILLA FLAVOR, CONDENSED MILK, ALMONDS AND SOY), MAY CONTAIN TRACES OF BRAZIL NUTS, CASHEWS, COCONUT, HAZELNUTS, MACADAMIA NUTS, PEANUTS, PISTACHIOS, WALNUTS, HAZELNUTS AND WHEAT.
DISTRIBUTED BY SAM'S WEST, INC.
BENTONVILLE, AR 72716
STORE IN A DRY COOL PLACE AWAY FROM DIRECT SUNLIGHT.

Decadence doesn't need to be complicated. Simple, mouthwatering ingredients are all it takes to make our dark chocolate thins your new go-to treat. Covering crushed almonds with creamy dark chocolate and sea salt, each snack-sized bite delivers simple indulgence.

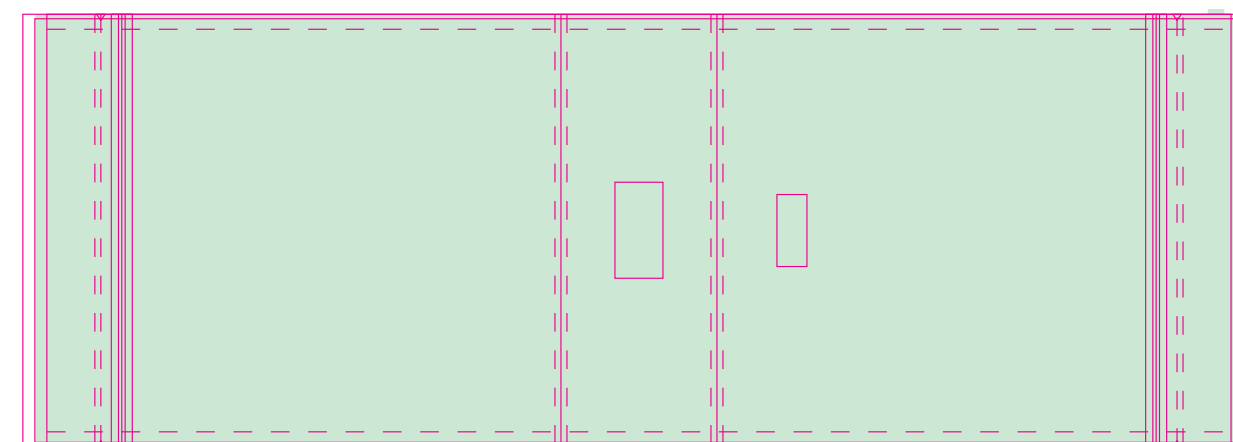
1 93968 46193 5

1 93968 46193 5

MATTE VARNISH SHOWN @ 25% SCALE



WHITE SHOWN @ 25% SCALE



equator Notice to Printer

TM is under spec and might fill in. Printer to do the best they can